



CHESTERFIELD FC

HOME FAN GUIDE



WELCOME

We are Chesterfield Football Club, known to many as the Spireites. Founded in 1866, we are one of the oldest football clubs in England, proud to represent the historic market town of Chesterfield. Our name and crest are inspired by the town's iconic Crooked Spire, a symbol of our heritage.

Our home is the SMH Group Stadium, a modern 10,200 capacity venue located five minutes from the town centre. Opened in 2010, it offers excellent facilities for fans and visitors, including hospitality suites, community spaces and a dedicated Club Superstore. The stadium serves not only as the heart of our footballing operations but also as a hub for the Chesterfield FC Community Trust.

We currently compete in League Two, after becoming champions of the National League in the 2023/24 campaign. Over the years, we've celebrated memorable achievements, including our 1997 FA Cup semi-final run.

Whether you're a lifelong supporter or visiting for the first time, Chesterfield FC offers a warm welcome, a proud history and a commitment to our fans and community.

CLUB OPENING TIMES

Monday 10am – 5pm

Tuesday 10am – 5pm

Wednesday 10am-5pm

Thursday 10am-5pm

Friday 10am – 5pm

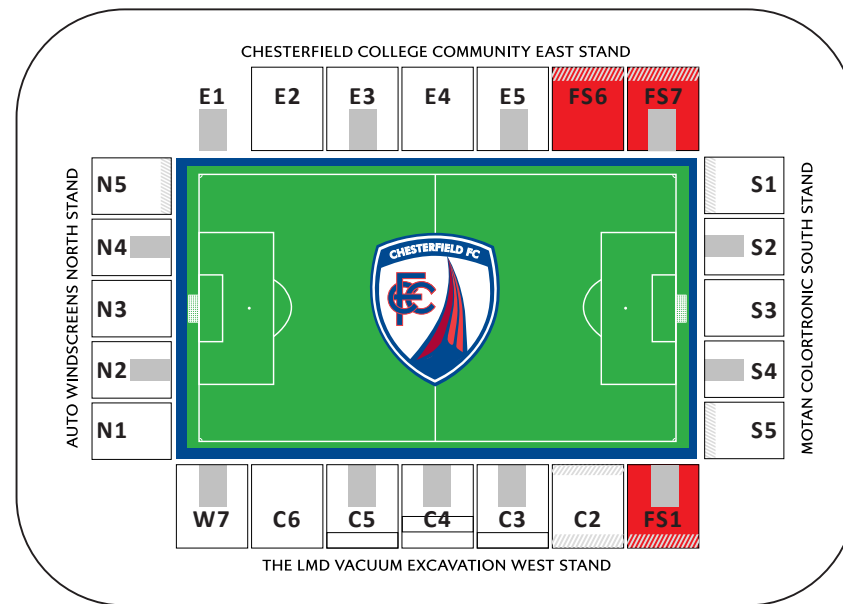
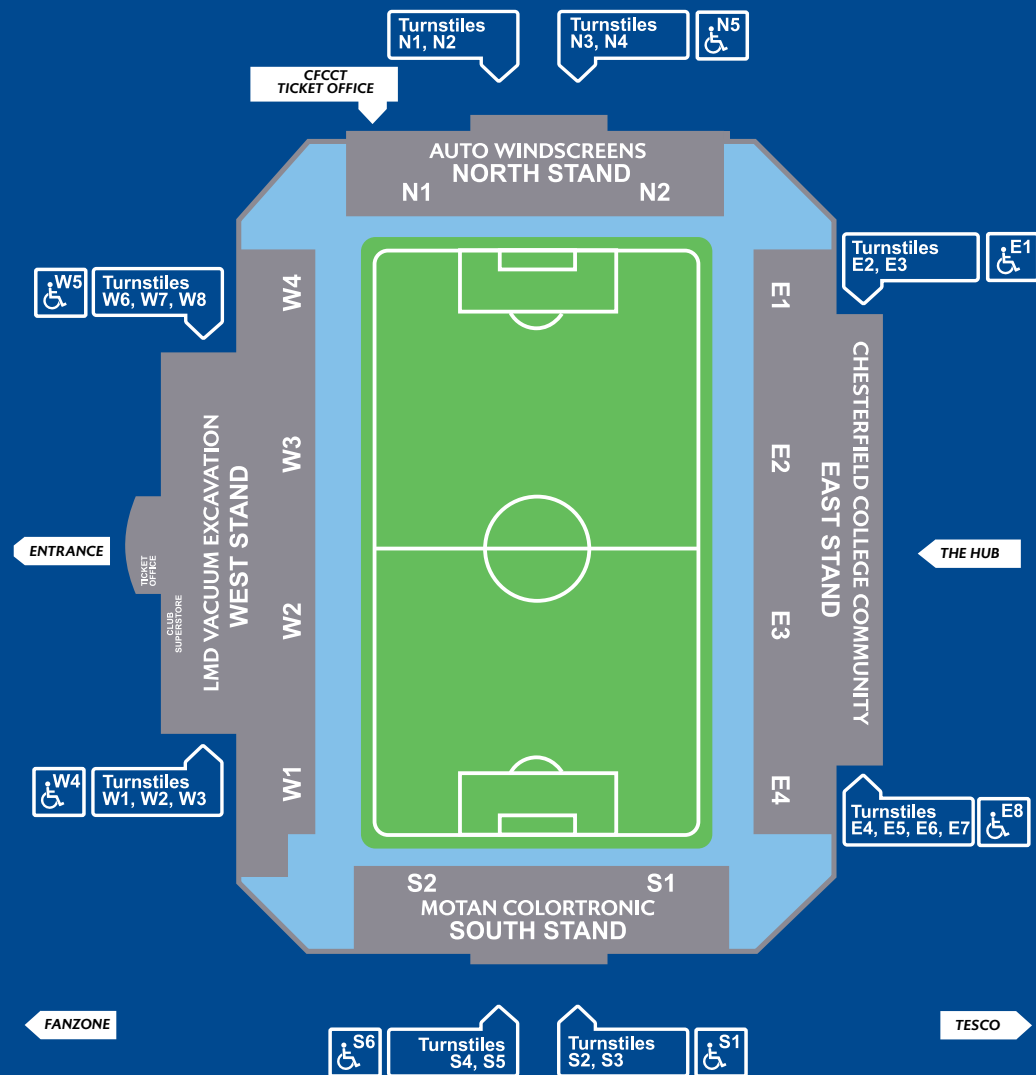
Saturday: Matchday: 9am-kick off

Non Matchday: Closed

Sunday – Closed



SMH Group STADIUM



STADIUM MAP

The SMH Group Stadium, located at 1866 Sheffield Road, Chesterfield, is a modern 10,000+ seated venue that opened in July 2010. It's situated just outside the town on Whittington Moor.

The Motan Colortronic (South) Stand is where you'll find the noisiest part of the stadium and perhaps less suitable for families with young children. The LMD Vacuum Excavation (West) Stand is the main stand, home to the directors' box and padded corporate seating. Across from there, you'll find the Chesterfield College Community (East) Stand, while the Auto Windscreen Stand is situated at the North end.

For families, there are two dedicated areas: one in The Chesterfield College Community Stand and another in The LMD Vacuum Excavation Stand, both offering reduced ticket prices to make it more accessible for families with young children to enjoy the matchday experience.

MATCH TICKET PRICES 2024/25

	LMD VACUUM EXCAVATION WEST STAND			CHESTERFIELD COLLEGE COMMUNITY EAST STAND		MOTAN COLORTRONIC SOUTH STAND	AUTO WINDSCREENS NORTH STAND
	ALL	W7	FAMILY	ALL	FAMILY	ALL	ALL
ADULT	£25	£24	£21	£24	£21	£21	£20
66+	£21	£20	£19	£20	£19	£18	£18
17-21	£18	£18	£15	£18	£15	£14	£14
14-16	£12	£12	£11	£12	£11	£12	£12
13 & UNDER	£10	£10	£9	£10	£9	£10	£10



TICKETS

To enter the stadium, tickets must be purchased in advance from the ticket office and scanned at the automated turnstiles. All seats are allocated and clearly marked on your ticket.

You can purchase tickets online anytime by visiting our ticketing portal. The ticket office at the stadium is open on home match Saturdays from 9am until kick-off. If the team is playing away on Saturday, the office will be closed. You can also pre-order tickets by calling the ticket line at 01246 269300 (option 1). We recommend buying tickets before matchday to avoid queues.

Home seating is available in the West, South, North and East Stands, while away fans are seated in the East Stand, specifically in blocks E1, E2, and E3.

There are various ticket options including paper tickets, Print at Home (scannable from your phone), Digital NFC (Digital Wallet Tickets) and season ticket cards. Please note that there is a £2 administration charge for printed paper tickets.

On matchdays, tickets bought in person at the ticket office increase by £2. You can avoid this extra fee by purchasing in advance or buying online.

Ticket office What3words:
latest.trunk.chain



TICKETING POLICY

The safety of young people at any fixture at the SMH Group Stadium is of paramount importance. We share the English Football League's passion for safeguarding and the embedding of policies and processes to ensure football fans of all ages can enjoy their experience with us.

To maintain the EFL standard of safeguarding, we insist that any spectator at the SMH Group Stadium under the age of 14 years is supervised by a suitable adult. This adult must be over 18 years and be known to the child. The adult and child do not need to sit together, but if the adult is in a different part of the stadium, they must be able to take responsibility for the child in the event of an incident.

Match tickets will not be sold to anyone under the age of 14 years without an accompanying adult ticket. This rule forms part of the Terms and Conditions of sale, and applies to ticket purchases online, or face to face at the stadium.

Children under the age of 14 entering the ground will be asked by stewards to provide details of their supervising adult before entry is allowed.



TRAVEL BY CAR

From the North-West & East:

From the M1 motorway, leave at Junction 30 (Balborough), signposted Chesterfield.

At the first roundabout, take the first exit. After about a quarter of a mile, you'll reach another roundabout.

Take the fourth exit (signposted Staveley/Chesterfield A619), passing McDonald's on your left, and cross over the motorway.

Follow the A619 through Mastin Moor and towards Staveley. At the next roundabout, take the first exit.

Continue straight over a mini roundabout, staying on the A619 towards Brimington.

In Brimington, follow the A619 around the large island. Stay in the left-hand lane and follow the signs to Chesterfield.

At the bottom of Brimington Hill, head straight toward Sainsbury's. At the Sainsbury's roundabout, keep in the left-hand lane and follow the A619 toward Tesco.

At the Tesco roundabout, take the third exit, going past the Casa Hotel and heading towards Tesco with the Donkey Derby pub on the right.

At the next roundabout, take the third exit onto B6057 Sheffield Road. The stadium will be visible on your left, just past the Tesco entrance.

From Sheffield:

Follow the A61 towards Chesterfield.

At the large roundabout, stay in the right-hand lane and take the fourth exit onto the B6057.

Continue along this road for about half a mile, passing the Derby Tup pub.

The SMH Group Stadium will be on your left.

From the South & East:

From the M1 motorway, leave at Junction 29.

At the roundabout, take the second exit onto the A617 dual carriageway.

Follow the A617 for approximately 7 miles.

At the end of the A617, get into the right-hand lane. At the roundabout, take the fourth exit onto the A61 dual carriageway.

Take the first exit at the Tesco's roundabout (Donkey Derby pub on your right).

At the next roundabout, take the third exit onto the B6057 Sheffield Road. The stadium will be on your left, just past Tesco entrance.

Car Park Entrance What3words:
latest.trunk.chain



PARKING

Parking is available at a cost of £12 per match, but spaces must be pre-booked as they are likely to sell out.

Alternative parking can be arranged at Tesco Chesterfield Extra through [Your Parking Space](#). This parking facility is conveniently located just 100 metres from the stadium.

There is also limited parking for supporters with disabilities. To enquire, please contact the ticket office at 01246 269300 (option 1).

Car Park Entrance What3words:
latest.trunk.chain



TRAVEL BY RAIL

The nearest train station to the SMH Group Stadium is Chesterfield Station.

WALKING DIRECTIONS:

From the station, follow the 'Stonegravels Way' footpath and cycle route, which runs over the dual carriageway.

Turn right down the steps and continue along Infirmary Road, passing Chesterfield College.

Proceed straight ahead along Canal Wharf.

When you reach Hazlehurst Lane, bear right onto a new footpath running alongside the dual carriageway.

Follow the footpath as it borders the Casa Hotel, ending at Lockoford Lane, where you'll see the SMH Group Stadium straight ahead.

This route takes approximately 30 minutes on foot.

TAXI OPTION:

Alternatively, a taxi from the station to the stadium costs approximately £7.



FOOD & DRINK

Our concourses inside the stadium offer a range of food and drink. A standard pint of lager costs £5 with a 500ml soft drink costing £3. We also have a local brewery serving cask ale, although these stands are cash only.

Hot food is also available, with a range of pies and sausage rolls for £5.50. All our pies are supplied by a local bakery. There is also a sweet vendor in the family stands of the Chesterfield College Community (East) Stand and LMD Vacuum Excavation Stand that is cash only.

Outside of the stadium, we have a dedicated Chesterfield FC Fanzone, which serves alcoholic and soft drinks in an outdoor setting. There are also vendors outside the stadium.





FANZONE

The Chesterfield FC Fanzone is the perfect place to kick off your matchday experience. Open 2.5 hours before every home game and staying open for an hour after full-time, it's a great venue for fans to meet at before heading into the stadium.

With top-quality beers on tap, you won't go thirsty. Music is played before and after the match, and there are both seating and standing spaces.

Whatever the weather, we're here and we look forward to seeing you at our Fanzone.

Car Park Entrance What3words:
plays.spout.clap



CLUB SUPERSTORE

The Chesterfield FC Club Superstore is your go-to destination for official Spireites merchandise. From replica kits and training wear to scarves, hats, and exclusive items, it's the perfect place to show your support.

Whether shopping online here or visiting in person at the SMH Group Stadium, you'll find a wide range of high-quality products to suit every fan. Stock up on matchday essentials or pick up a gift for a fellow supporter.

The Club Superstore also handles ticket sales throughout the week.

What3words:
atoms.dark.taker

SHOP OPENING TIMES

Monday	10am – 5pm
Tuesday	10am – 5pm
Wednesday	closed
Thursday	11am – 7pm
Friday	10am – 5pm
Saturday	9am till 12pm
Sunday	closed

Matchdays

1866

THE



CHESTERFIELD

✓ MILTON KEYNES DONS

WEDNESDAY, JANUARY 1, 2025 | 3PM



PROGRAMME

Our official matchday programme is available for purchase from programme sellers located around the perimeter of the stadium. Each issue includes exclusive player interviews, player stats and a detailed analysis of both teams.

Programmes are priced at £3 and are available for all first-team fixtures.

If you forget to pick up a copy on matchday, any remaining programmes can be purchased from the Club Superstore, subject to availability.

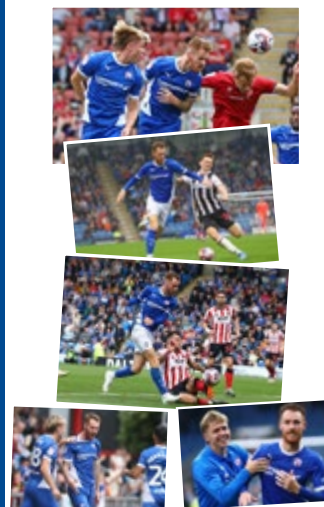
during matches was great. I really loved it there. I loved the memories I created at Portsmouth and the club will always hold a special place in my heart. It's definitely a club that I'll always keep an eye on and follow their progress, for sure.

What's your advice to any young footballers trying to make it as a professional?

My advice for young footballers aspiring to turn professional is to always train as you play and maintain standards throughout your journey. Consistency in your practice is crucial; treating every training session as an opportunity to improve helps develop your skills. Equally important is staying humble - no matter how much success you achieve. The football world is unpredictable and you never know what's around the corner so enjoy every moment but be humble through them. Dedication to the sport and effort will get you a long way.

What's one thing about football you don't think you could ever replace and why?

One aspect of football that can never be replaced is the camaraderie and bond you develop with your teammates. There's something special about sharing the highs and lows of the game with a group of individuals



who share the same passion and goals. The moments spent together, whether in training, during matches, or even off the pitch, create lasting friendships. No matter where my career takes me after football, I will always cherish the relationships I have made within the game.

Does being back home near your family make you enjoy your football even more?

Absolutely, being back home near my family has massively allowed me to enjoy my football even more. It's truly priceless coming home to my



"I absolutely love it here and I love going home to my family. It's something you can't put a price on."

kids every day after training. This is obviously something I haven't always had at my previous clubs so for sure I appreciated it and realise the value playing close to home brings. I absolutely love it here and I love going home to my family. It's something you can't put a price on.

What's your plan after football?

It's not something I'm set on but I think I'd like to stay within football. I like the idea of becoming an agent and getting involved in that side of the game. I absolutely love football so if I can stay within

the game I definitely would like to. Obviously right now I'm still fully focused on my playing career but as I get older it is something you have to think about.



MATCHDAY INTINERARY

9:00 AM The HUB Café & Chester's Den open! It's the perfect spot for a morning coffee while the kids enjoy burning off some energy.

10:00 AM Club Superstore opens. Why not browse the latest Chesterfield FC official merchandise?

12:00 PM Hospitality lounges open for those looking to enjoy a pre-match meal.

1:30 PM Turnstiles open and programme sellers will be stationed around the stadium. Chester the Field Mouse will also be making his rounds, so keep an eye out for him!

From 1:00 PM The players arrive. Be sure to grab your autograph book and pen from the Club Superstore!

2:15 PM The players take to the pitch for their warm-up.

3:00 PM Kick-off!

Got a spare 20 minutes? Just across from The HUB is the Chesterfield FC Memorial Garden. It features items from our old stadium, including an original turnstile, plaques, and a war memorial dedicated to former players and officials of the club. Open 24/7, it's a peaceful spot to explore.



OFFICIAL SUPPORTERS GROUPS

The Chesterfield FC Supporters' Forum enables any Spireites supporters to come along to its monthly drop-in, which is held at the stadium in the HUB (East Stand) on the first Thursday of every month at 7pm. The Drop-in is also broadcast online to enable fans unable to attend in person to contribute.

The Drop-in feeds questions and comments into the Supporters' Forum committee, which is made up of nine elected (three-year terms) supporters including chair Phil Tooley, plus non-elected members including the supporters' liaison officer, the disability liaison officer, the dedicated football officer (police) and the Chesterfield FC director responsible for Supporter Engagement, Dr Paul Stankard. The full committee meets around eight times a year and seeks to implement actions which will improve supporter experiences both at home and away games. Successes have included the introduction of a Fan Zone and an improved Public Address system.

Supporters can contact the Forum at any time via forum@chesterfield-fc.co.uk.



CHESTER THE FIELD MOUSE

The club's mascot is Chester the Field Mouse – he can often be seen on matchdays in and around the stadium meeting our young supporters. Chester loves having his photo taken so don't be afraid to stop him and ask!



CHESTER'S DEN

Based in the HUB at the SMH Group Stadium, Chester's Den playcentre is the only soft play centre based inside a football stadium in the country.

The play centre features slides and rope swings, a scramble wall, football and basketball pitches. Free parking is available on non-matchdays at the stadium for those accessing Chester's Den. The play centre, along with the HUB Café, is open to the public seven days a week including matchdays.

DEN OPENING TIMES

Monday – Saturday:
9am – 6pm

Sunday:
10am – 4pm



ZERO TOLERANCE

At Chesterfield Football Club, we are proud to promote equality, diversity, and inclusion at every level of our organisation. We are committed to creating a welcoming and respectful environment for everyone, regardless of race, ethnicity, gender, sexual orientation, ability, or background.

We firmly stand against all forms of discrimination, including racism, sexism, homophobia, and any other form of prejudice. Such behaviour has no place at our club, in football, or in society.

As a community-focused club, we celebrate the diversity of our fans, players, and staff. Together, we strive to ensure that Chesterfield FC remains an inclusive space where everyone feels valued and supported, both on and off the pitch.

Across each department we work together to uphold the values of respect, unity, and equality that define our club.



CLUB HISTORY

We are Chesterfield Football Club, the Spireites, proudly representing our town since 1866. As one of the oldest clubs in England, our history is deeply tied to Chesterfield's identity, symbolised by the famous Crooked Spire that inspires our name and crest.

We turned professional in 1891 and became a founding member of the Football League's Third Division North in 1921. Over the years, we've faced highs and lows, but our passion has never wavered. One of our proudest moments came in 1997, when we reached the FA Cup semi-finals—a historic run that saw us narrowly miss out on the final in dramatic and controversial fashion against Middlesbrough.

For nearly 140 years, we called Saltergate home before moving to Sheffield Road in 2010, a modern venue fit for the next chapter of our journey. Through every challenge, we've remained at the heart of our community, driven by the unwavering loyalty of our supporters.



CONTACT US

To contact a department directly,
please use the contact details below:

For ticketing queries, purchases or refunds (including personal assistance tickets, travel and matchday hospitality) please contact the ticket office on 01246 269300 (option 1) or email tickets@chesterfield-fc.co.uk

For disability access enquiries, please email the DLO via dlo@chesterfield-fc.co.uk

For Club Superstore returns, sales or enquiries, please email shop@chesterfield-fc.co.uk

If you have any queries or would like to give us some feedback about your experience at the SMH Group Stadium, please email slo@chesterfield-fc.co.uk

CHESTERFIELD FC

SMH GROUP STADIUM
1866 Sheffield Road, Chesterfield
Derbyshire, S41 8NZ
01246 269300

www.chesterfield-fc.co.uk